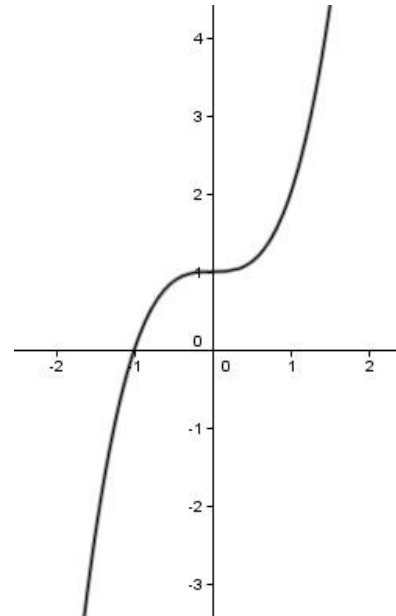


1) Complete the table for the following graph.

X	-2	-1	0	1	2
Y					



2) Graph the following rational functions and determine their vertical and horizontal Asymptotes

- a) $f(x) = 5/x$
- b) $f(x) = (4/x) + 1$
- c) $f(x) = (8/x) - 2$
- d) $f(x) = 8/(x+2)$
- e) $f(x) = 2/(x - 1)$
- f) $f(x) = [6/(x + 1)] + 4$
- g) $f(x) = [6/(x + 1)] - 4$
- h) $f(x) = [7/(3x + 1)] + 3$
- i) $f(x) = [5/(2x - 4)] - 3$